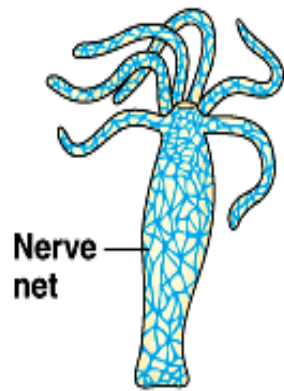


Pre AP Biology

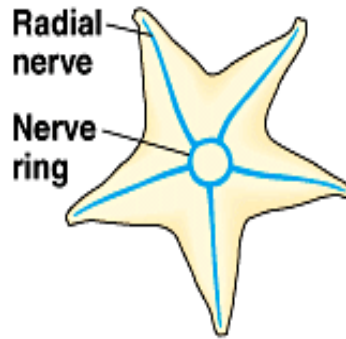
Nervous Systems

(8.9)

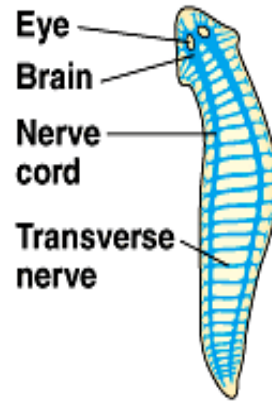
Animal Nervous Systems



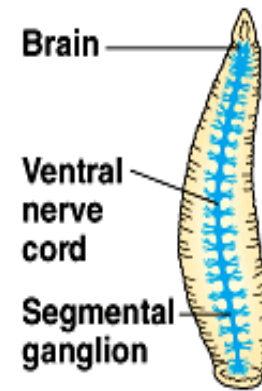
(a) *Hydra*
(cnidarian)



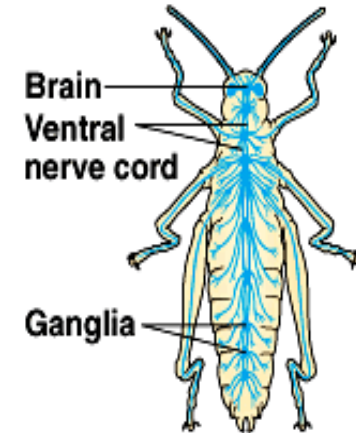
(b) *Sea star*
(echinoderm)



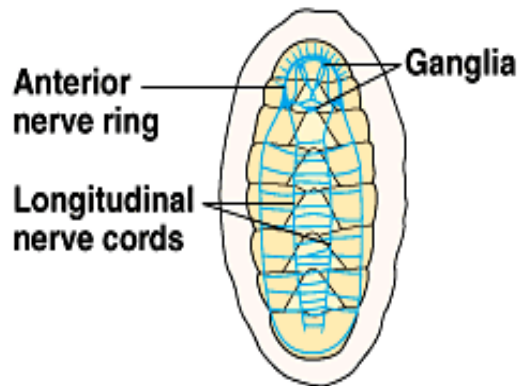
(c) *Planarian*
(flatworm)



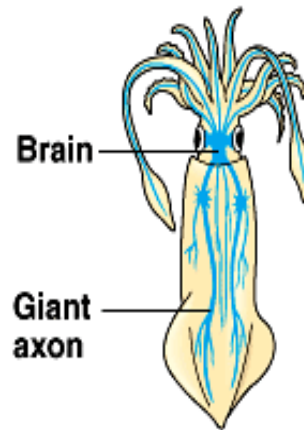
(d) *Leech*
(annelid)



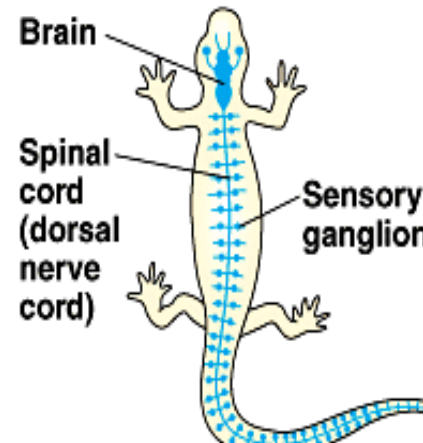
(e) *Insect*
(arthropod)



(f) *Chiton*
(mollusk)

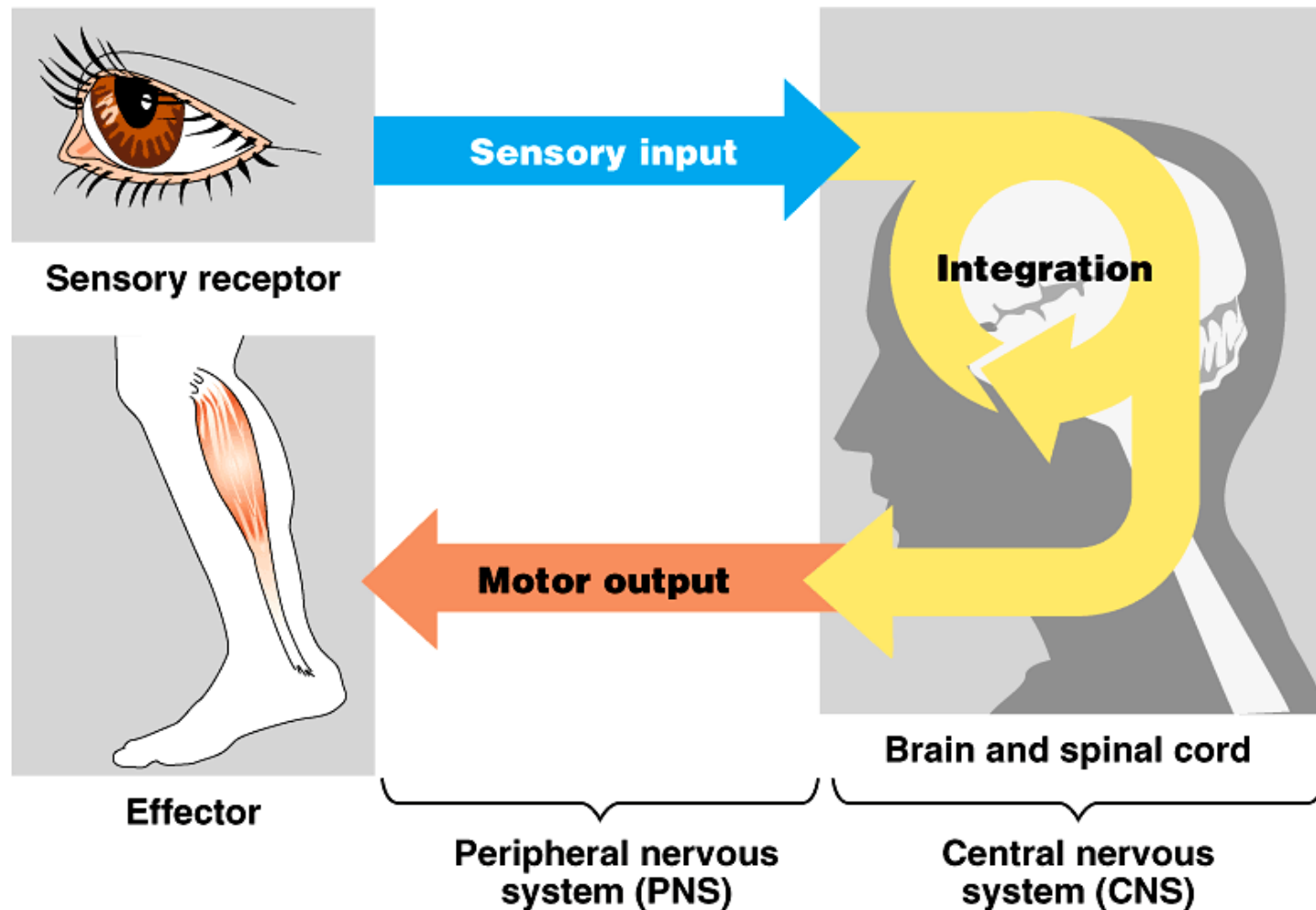


(g) *Squid*
(mollusk)

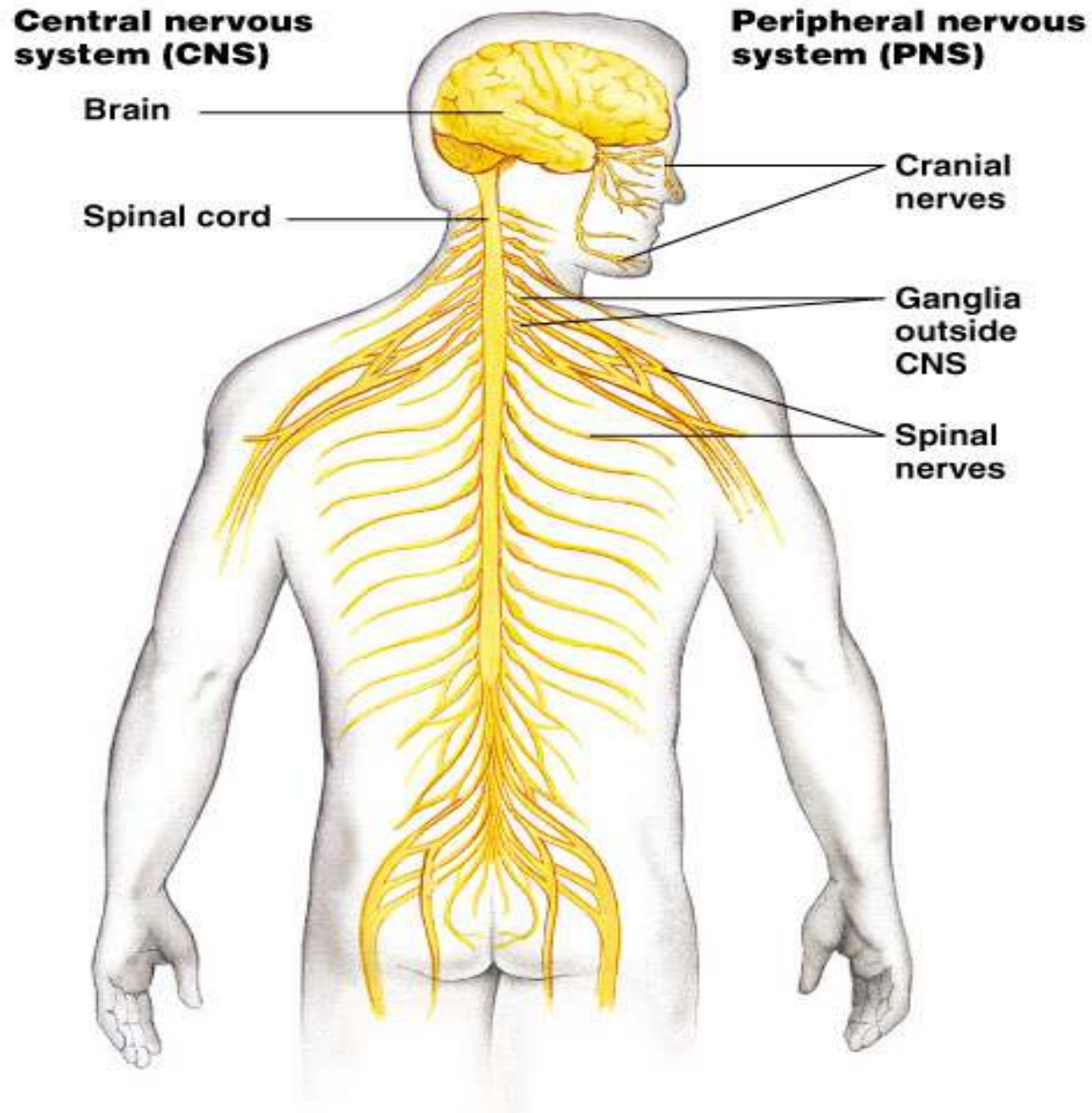


(h) *Salamander*
(chordate)

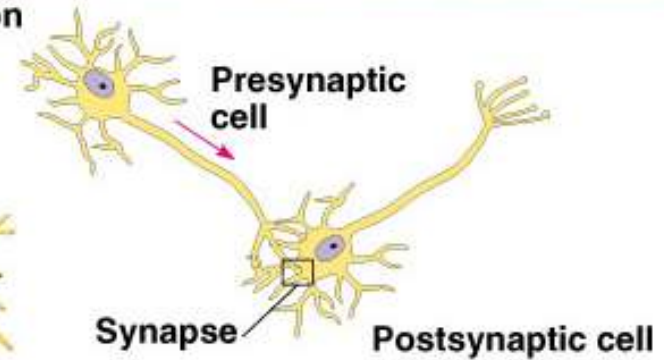
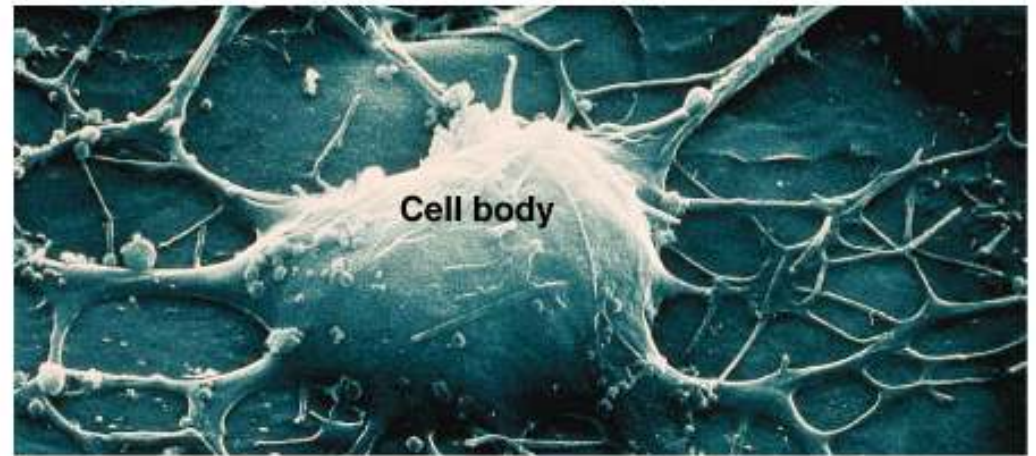
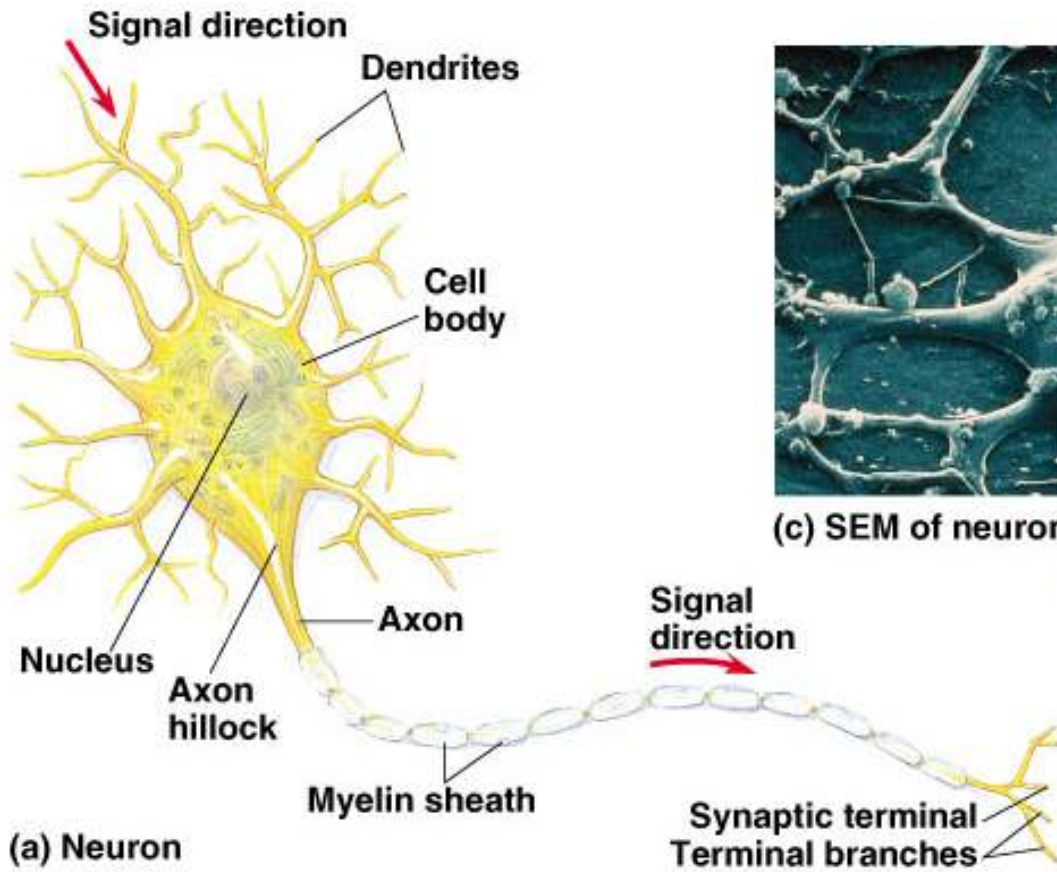
Overview of the Nervous System



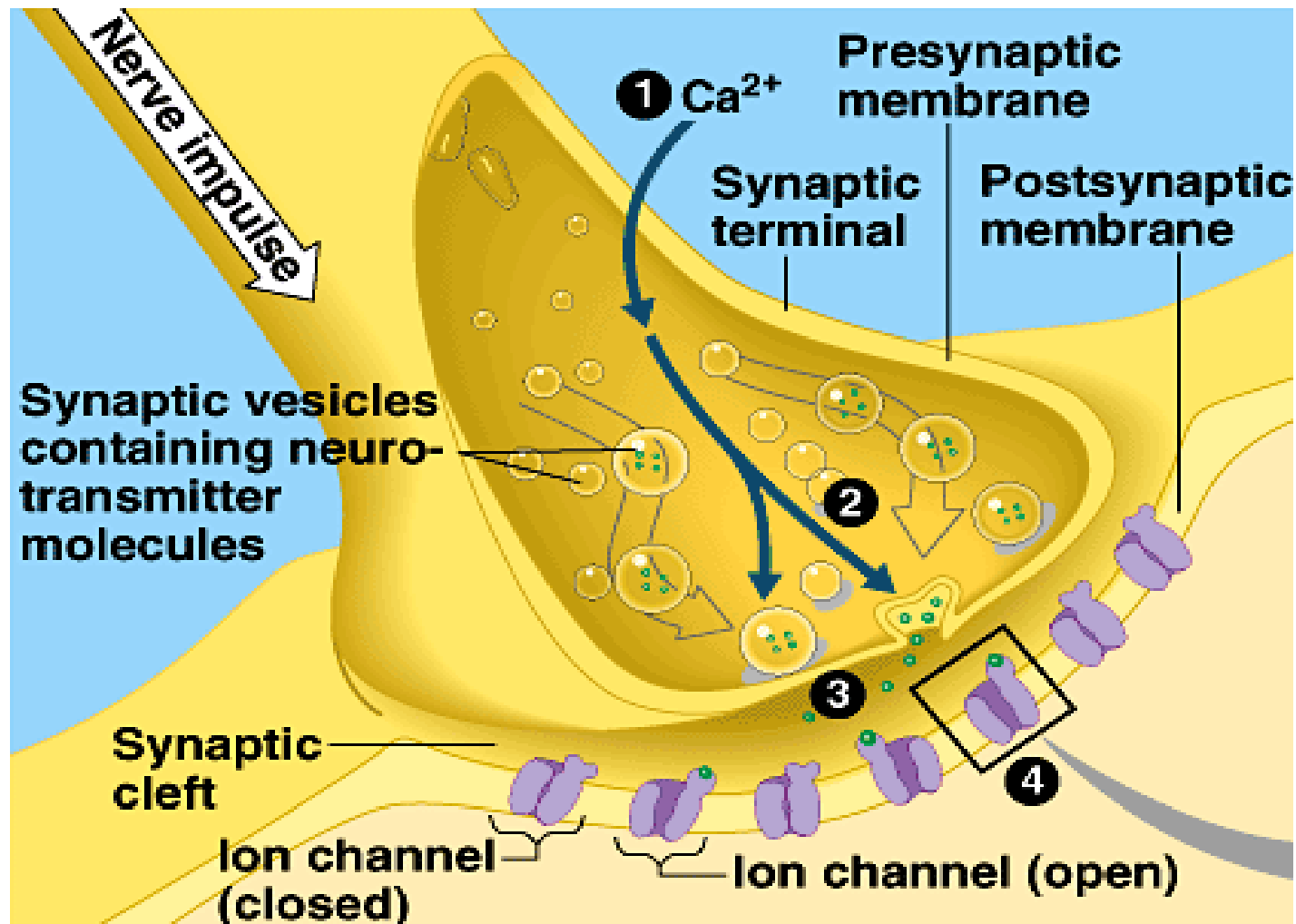
CNS vs. PNS



Neuron Structure



Synapse and Neurotransmitter



Reflex Arc

The *simplest* neural pathway

