

Pre AP Biology

Kingdom Fungi

8.5

Fungi

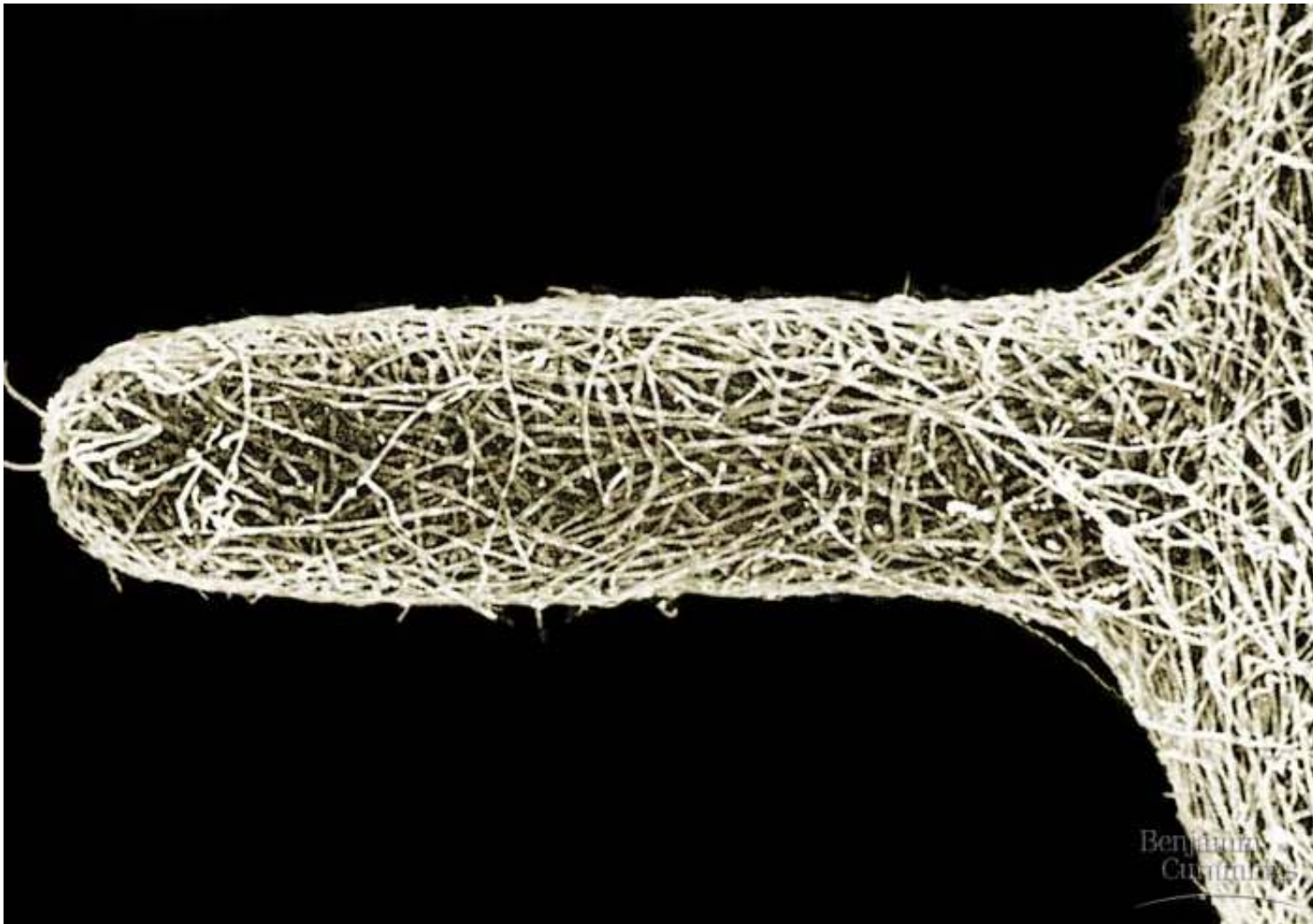
(Decomposing a fallen tree.)



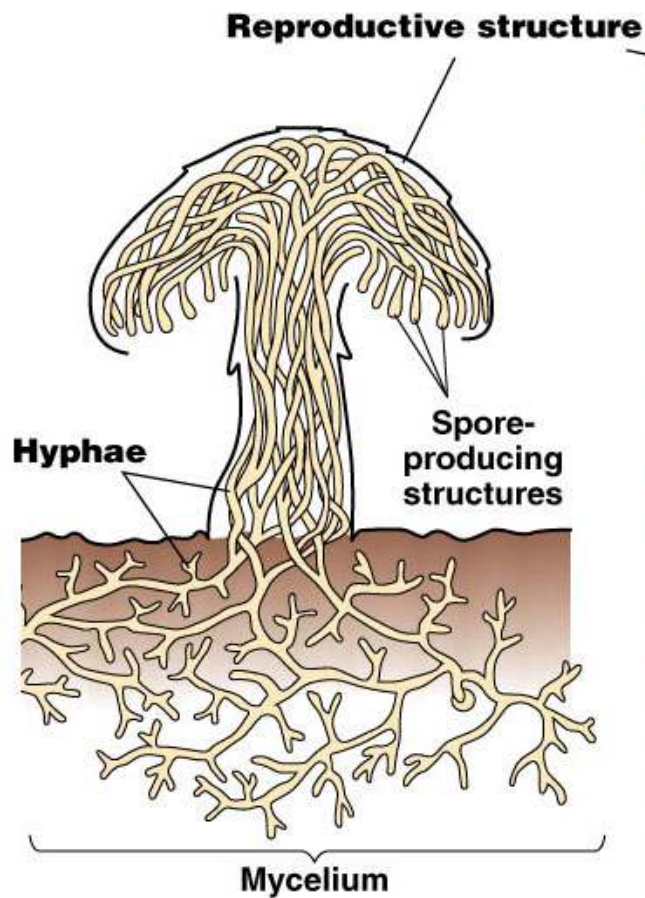
Cell walls composed of Chitin sugar.



Mycorrhizae covering a root



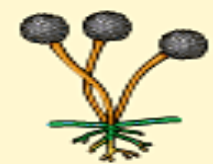


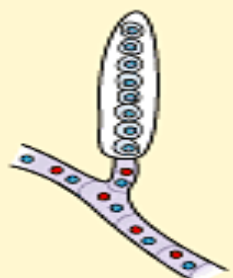




Fungal Structure



Fungal Classification

(Based on sexual reproductive structure.)

Table 31.1 Review of Fungal Phyla	
Phylum	Key Reproductive Feature
Chytridiomycota (chytrids) 	Motile spores with flagella 
Zygomycota (zygote fungi) 	Resistant zygosporangium as sexual stage 
Ascomycota (sac fungi) 	Sexual spores borne internally in sacs called asci 
Basidiomycota (club fungi) 	Sexual spores borne externally on club-shaped structures called basidia 

Chytridomycota – Chytrid below



Zygomycota – Zygosporangium below



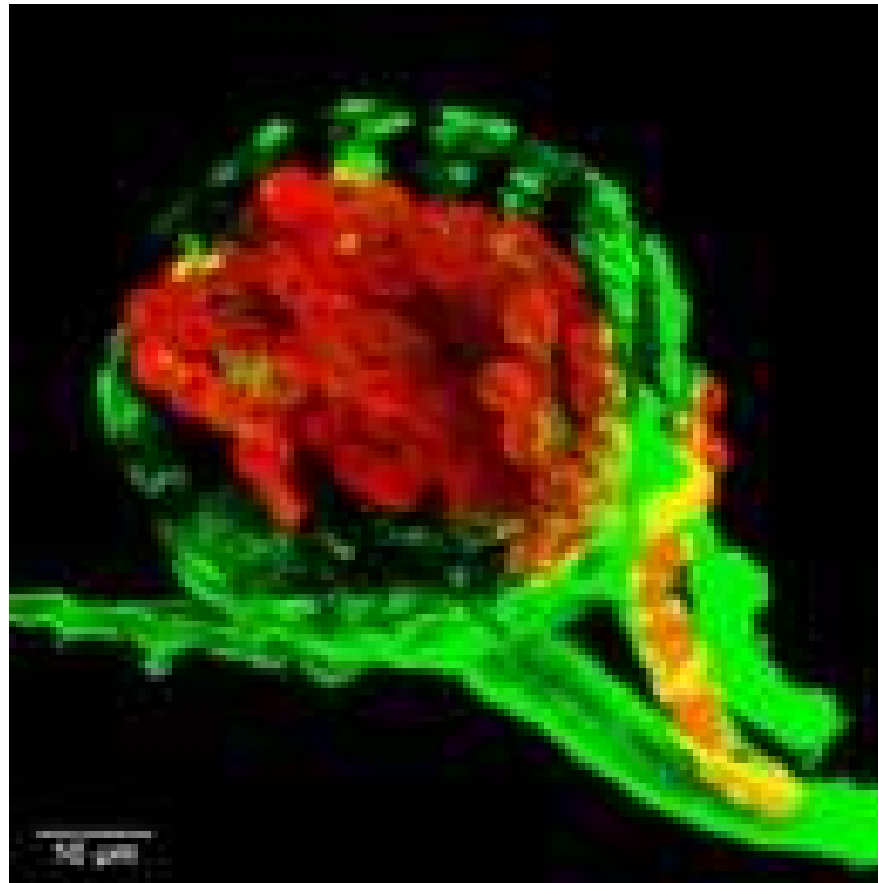
Black bread mold



Green bread mold



Glomeromycetes – Arbuscular below



Ascomycota – Ascus seen below



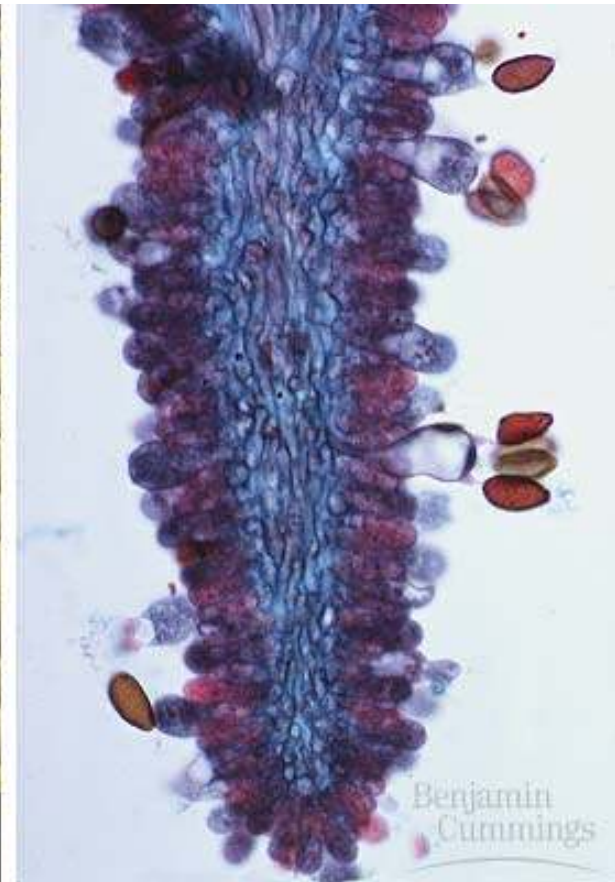
Basidiomycota – Basidium seen below



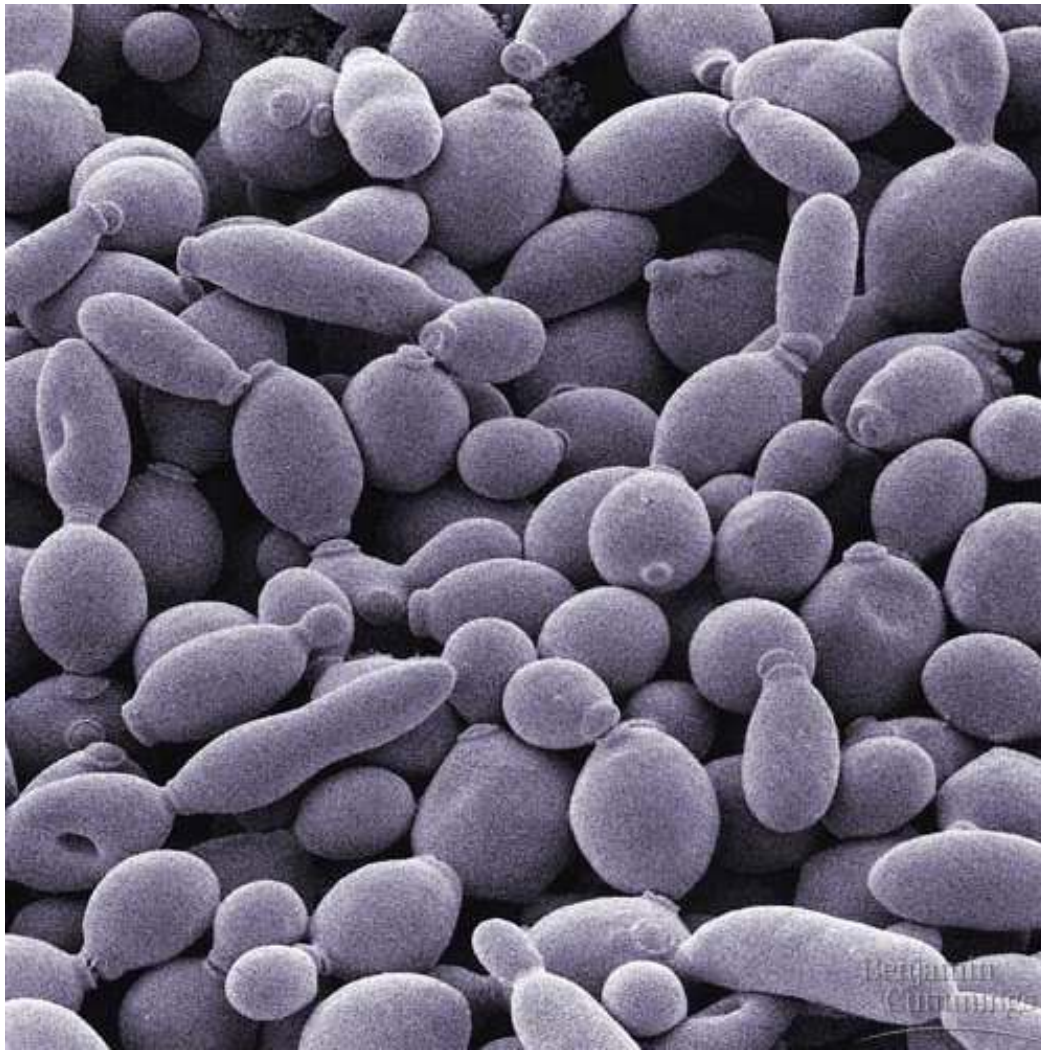
This is called a “fairy ring”.



Gills of a Basidiomycota and Basidia under a microscope.



Deuteromycota - Yeast



Fungal Decomposing



Wheat Rust



Corn Smut



Chestnut Blight



Ring Worm on a human



Athletes Foot



Penicillin Medicine made from a fungus

