

# Pre AP Biology

Community Ecology (6.3)

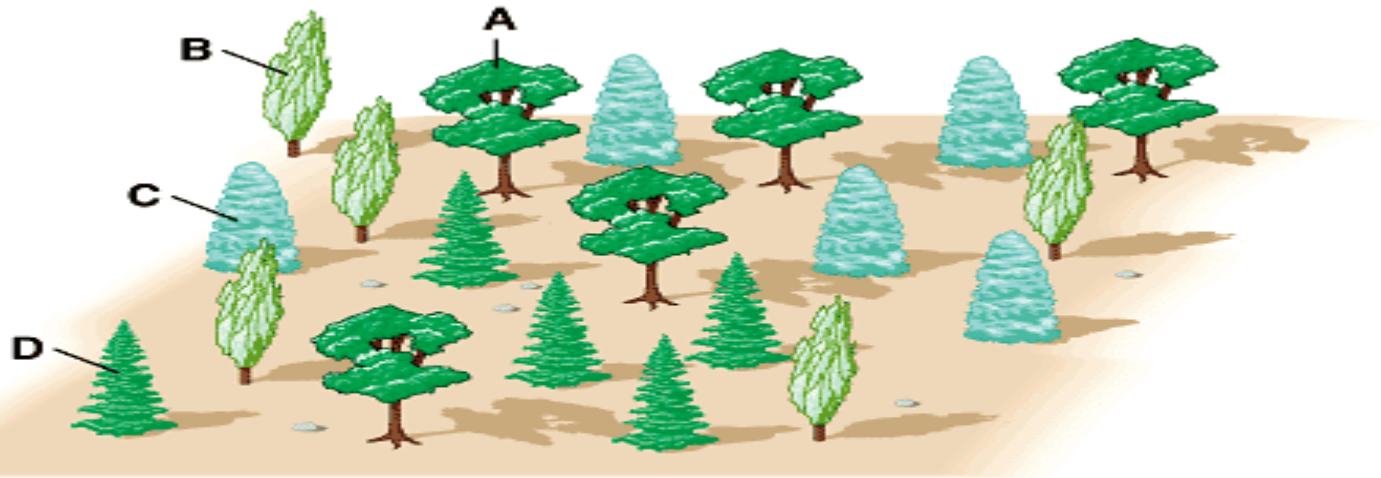
Part 1

# Community



# Species Richness (top)

## Relative Abundance (bottom)



**Community 1**

A: 25% B: 25% C: 25% D: 25%



**Community 2**

A: 80% B: 5% C: 5% D: 10%



# Competition and also predation



# Herbivory

(This is also predation.)





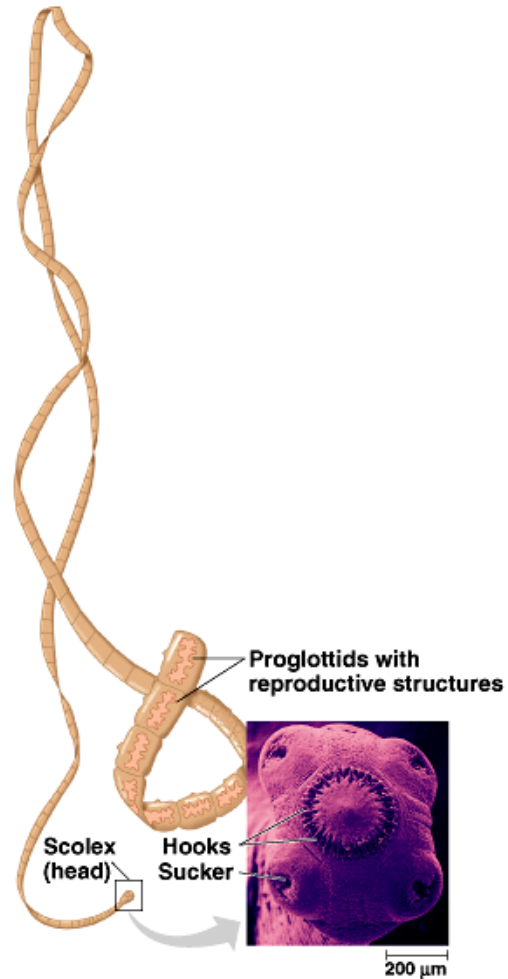
# Parasitism

## Ectoparasite



# Parasitism

## Endoparasite (Tapeworm)



Copyright © Pearson Education, Inc., publishing as Benjamin Cummings.

# Cryptic Coloration (Can you see the bird?)





# Aposematic Coloration



# Batesian Mimicry (Catapillar and snake)



# Mullerian mimicry (Cuckoo bee and yellow jacket)



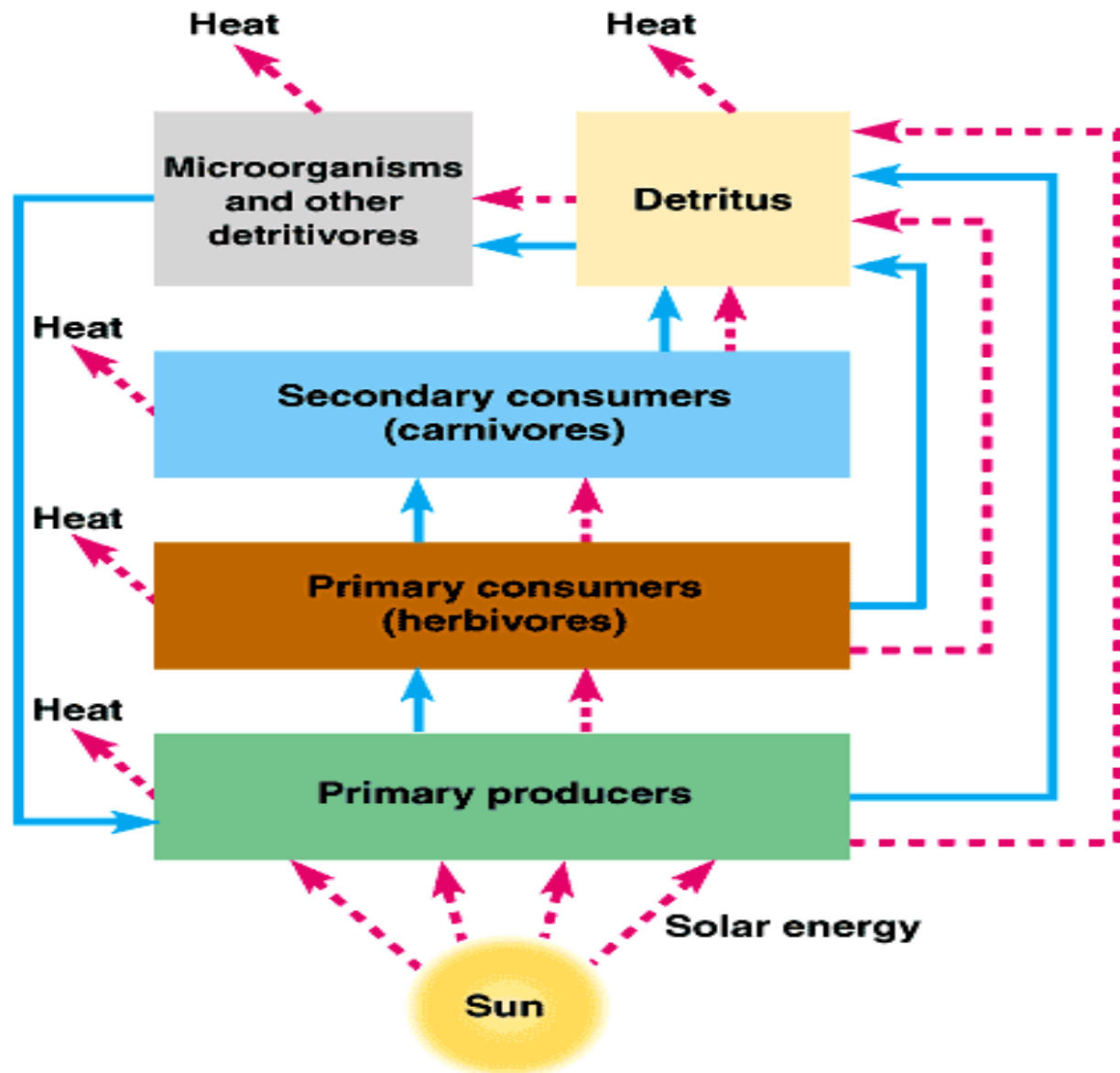


# Pre AP Biology

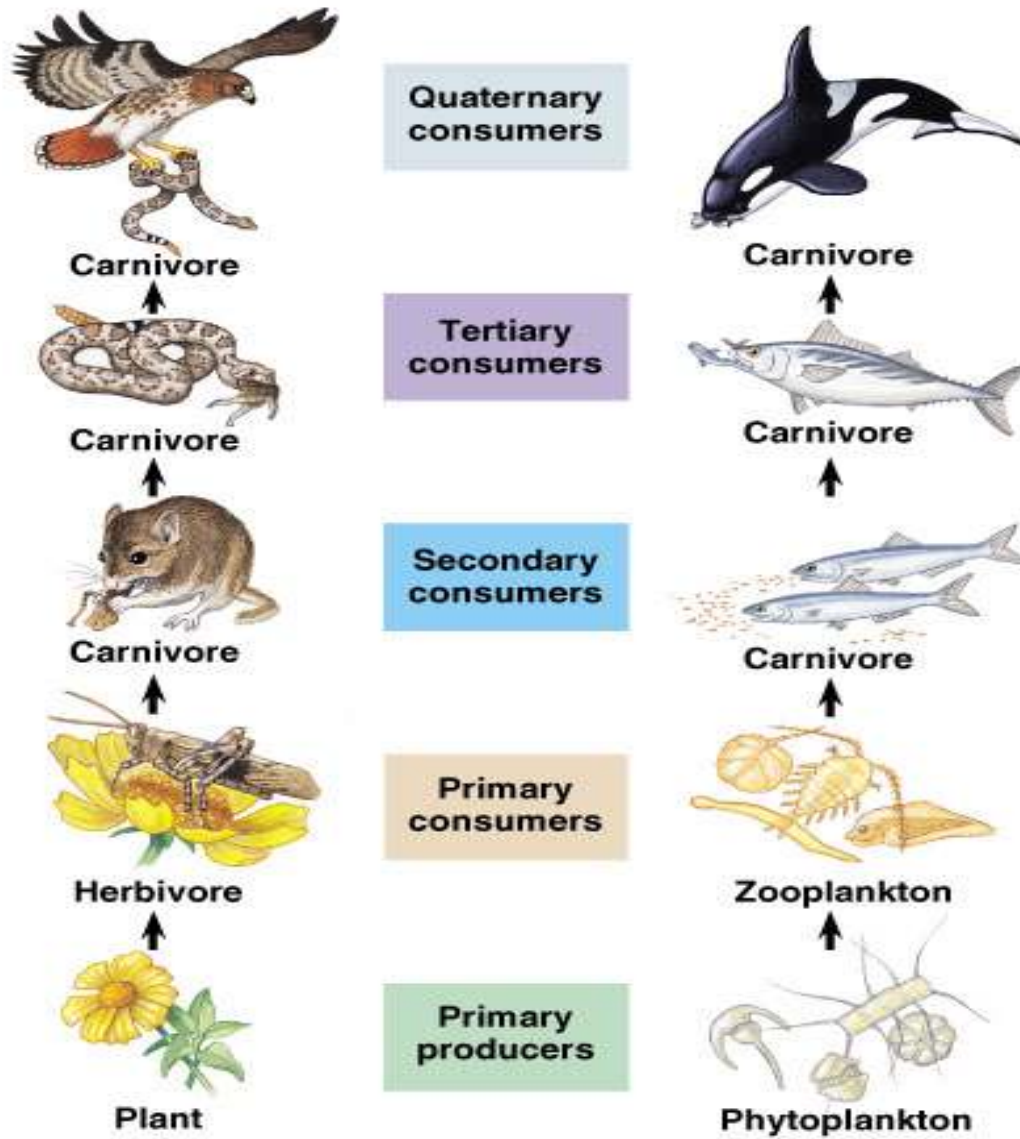
Community Ecology (6.3)

Part 2

# Energy flow and trophic levels



# Food Chains

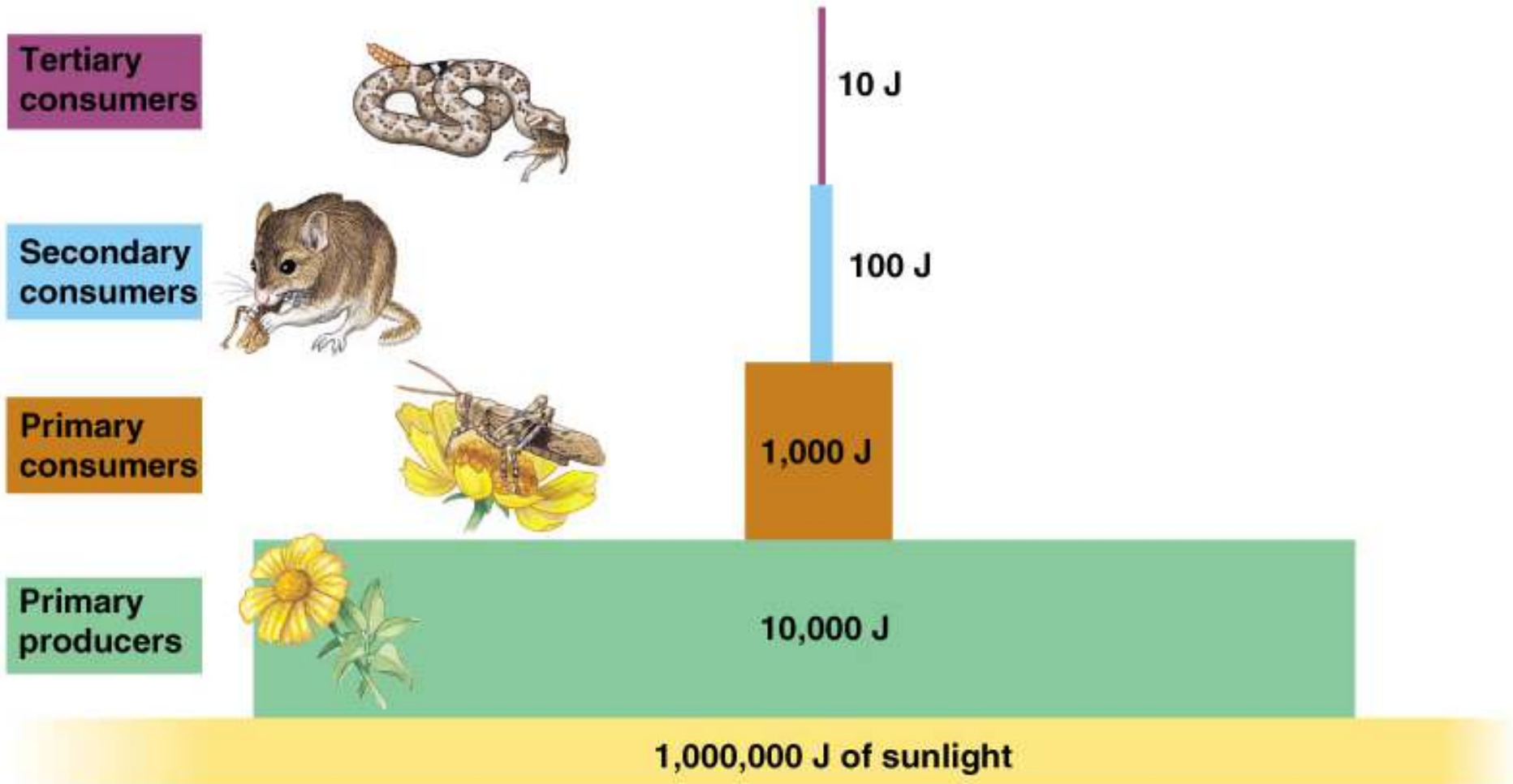


**A terrestrial food chain**

**A marine food chain**

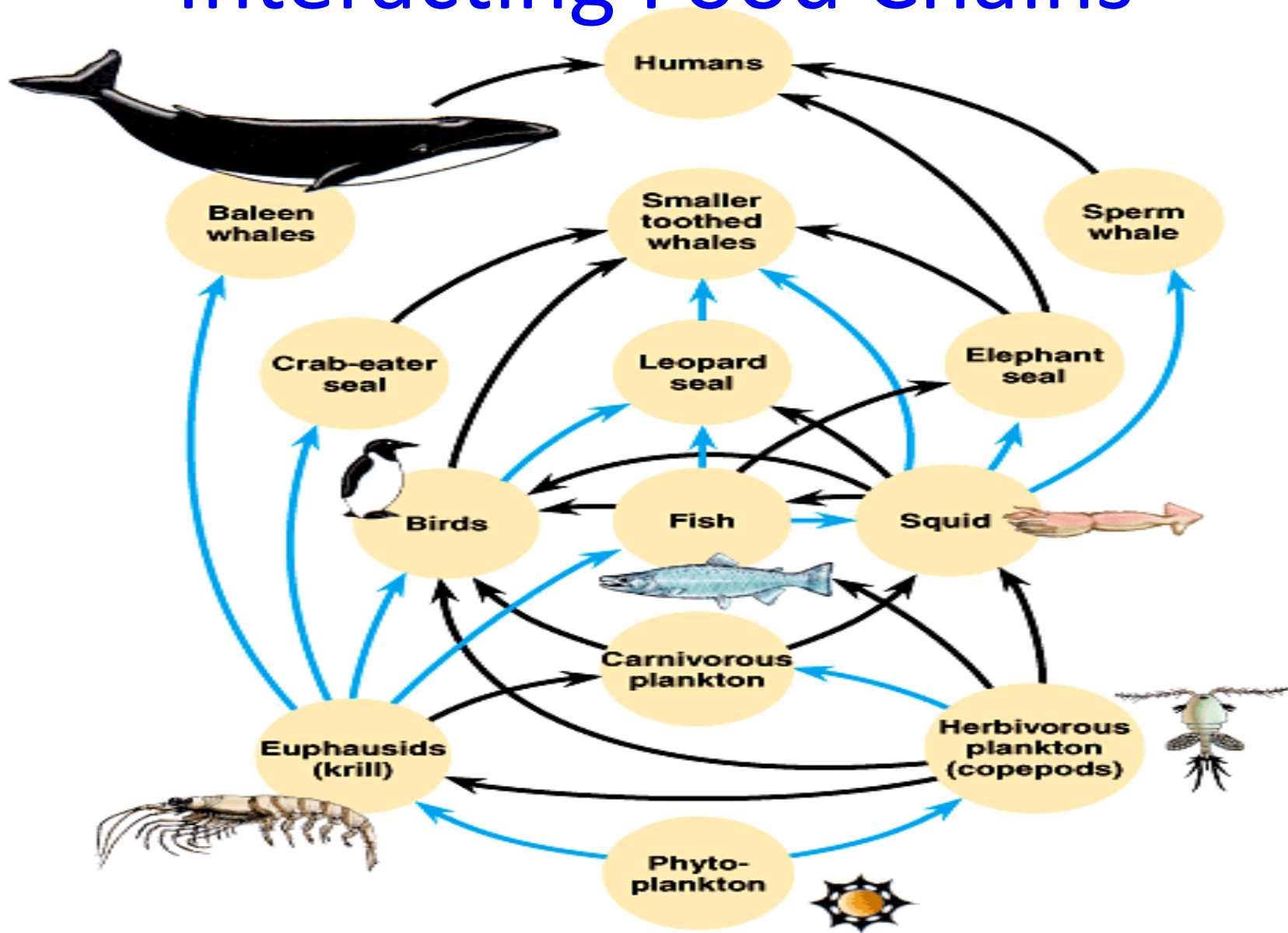


# 10% Rule



# Food Webs

## Interacting Food Chains



# Pre AP Biology

Community Ecology (6.3)

Part 3



# Succession (Mount St. Helens, WA)



# Primary Succession (Remember Hawaii?)



# Primary Succession (Pioneer species)





# Primary Succession



# Primary succession



# Primary Succession Climax Community (Hawaii today)





# Secondary succession (Forest fire destroys the forest)





# Secondary Succession (Then over time...life returns)

