

# Pre – AP Biology

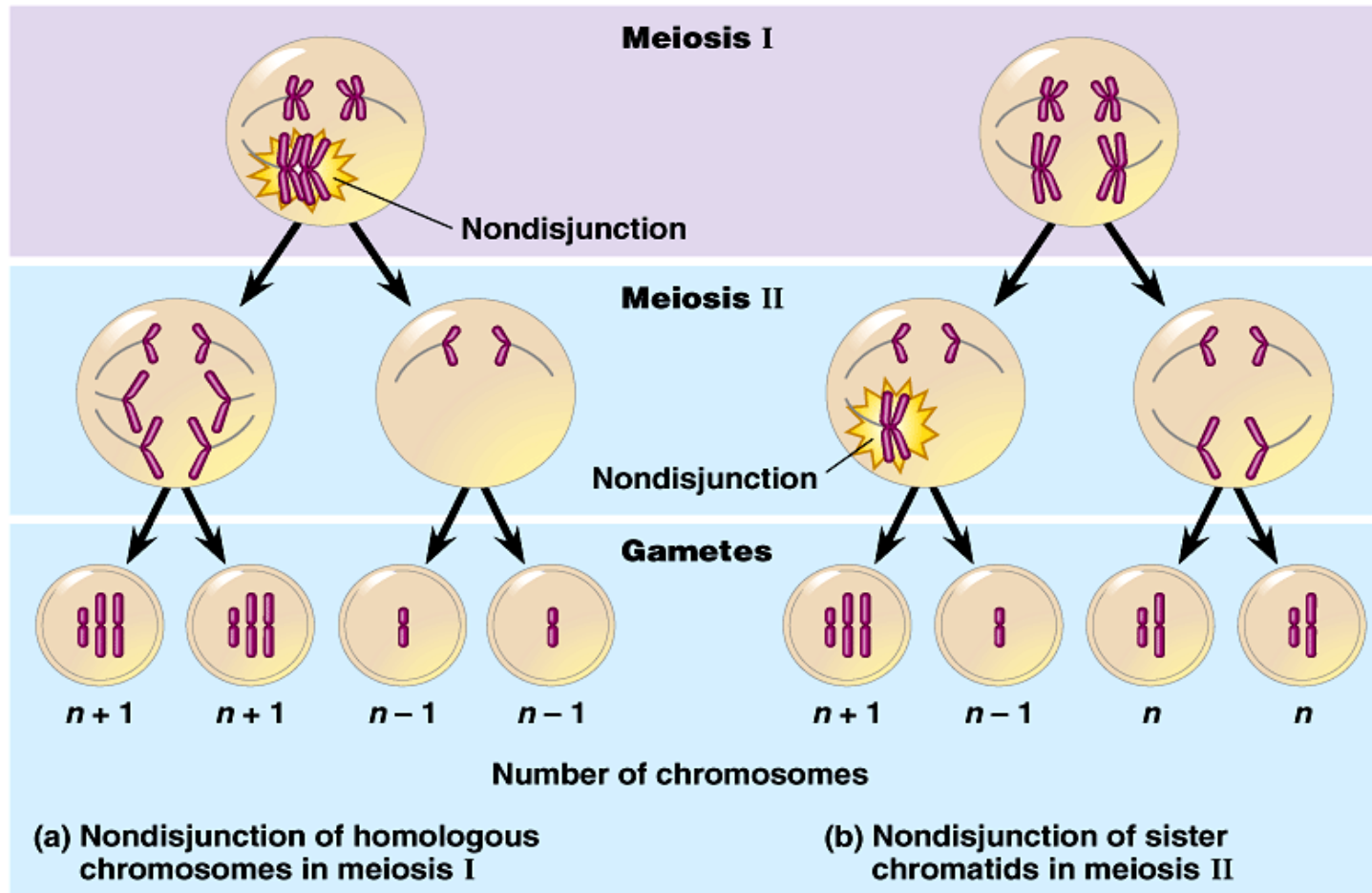
Abnormal Chromosomal Number or  
Structure (5.6)

When Meiosis goes wrong

# Non-Disjunction of Chromosomes

Can occur in either Anaphase I or II

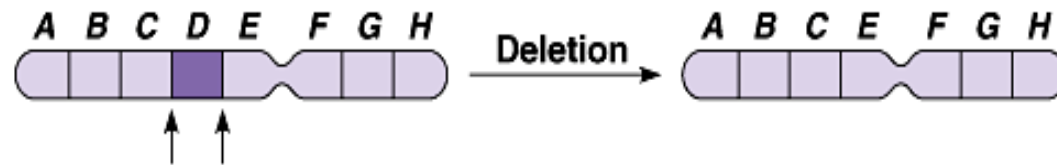
Look at the outcomes based on when it occurred.



# Chromosome Structure Abnormalities

Can you “see” the term in the graphics?

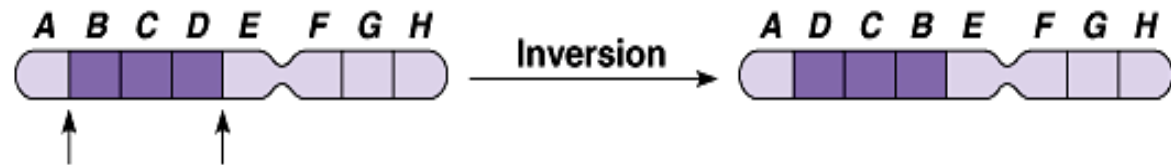
(a) A **deletion** removes a chromosomal segment.



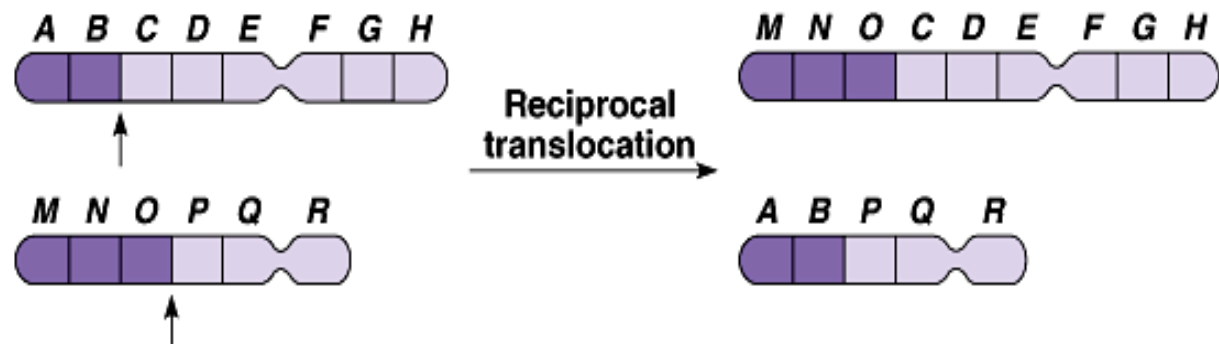
(b) A **duplication** repeats a segment.



(c) An **inversion** reverses a segment within a chromosome.



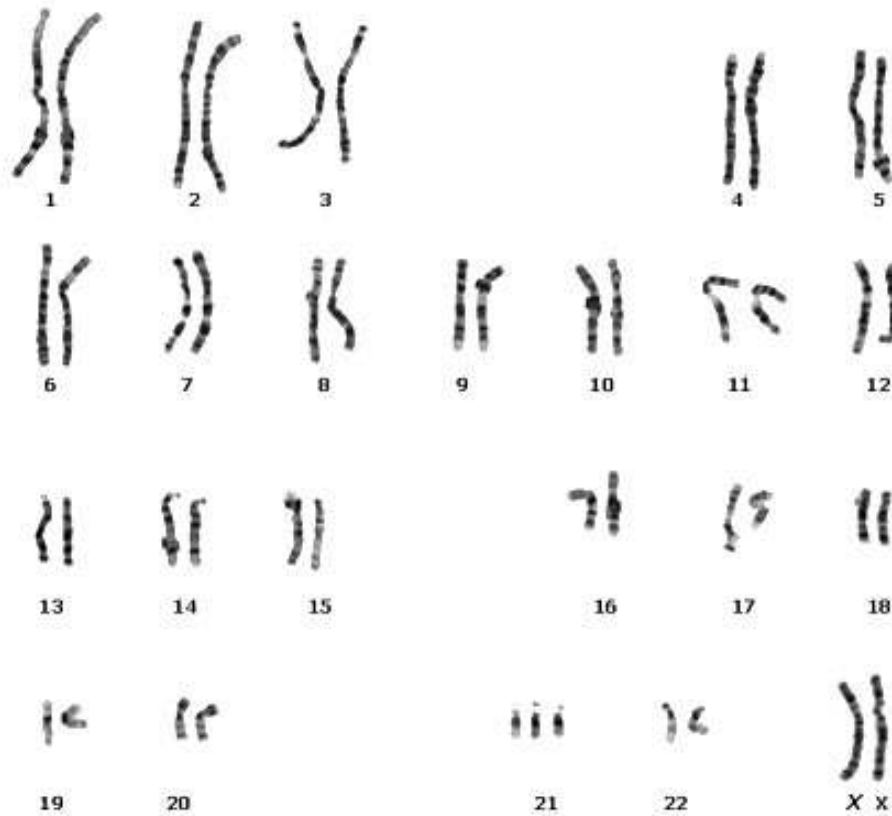
(d) A **translocation** moves a segment from one chromosome to another, non-homologous one.



# Trisomy 21

## A.K.A. Down's Syndrome

Trisomy 21



# Turner's Syndrome

(**ALSO** a non-disjunction error)



[medgen.genetics.utah.edu](http://medgen.genetics.utah.edu)