

Pre – AP Biology

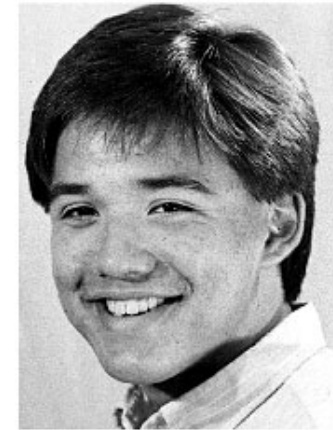
Meiosis Introduction (5.3)

Parent to offspring

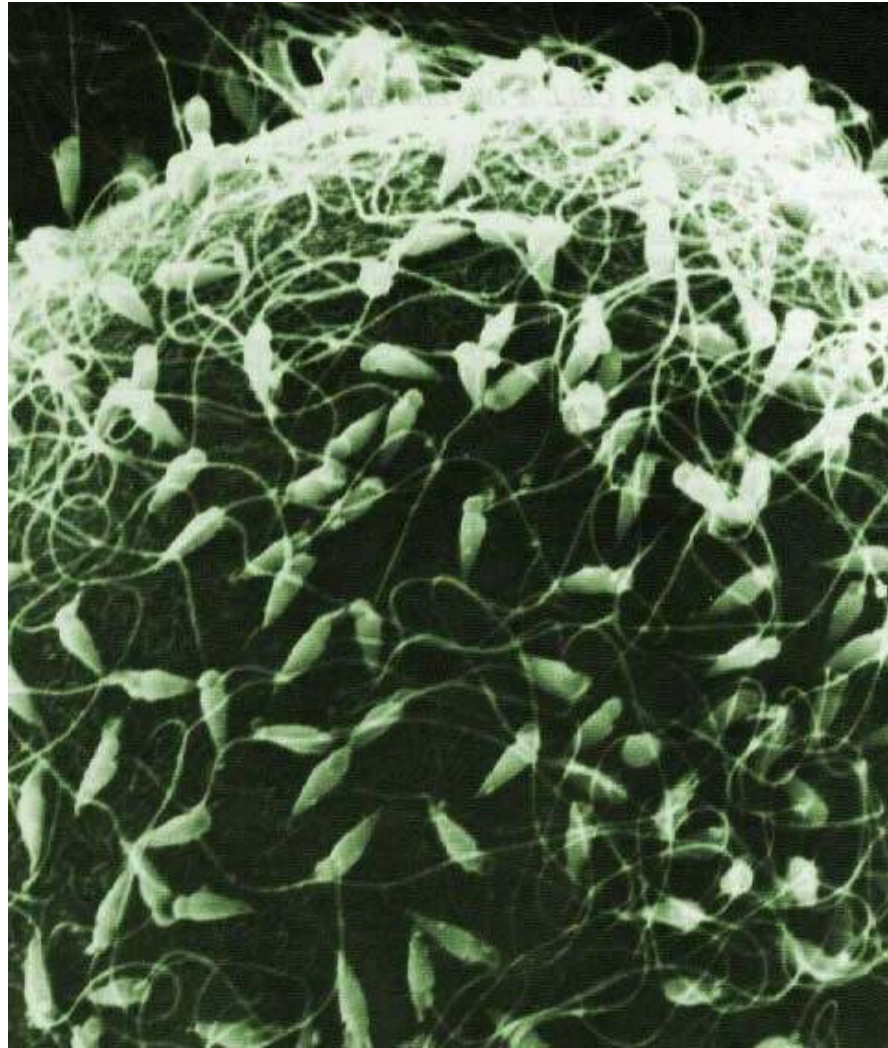


Couple 1

Couple 2



Mom and Dad's DNA contribution
The egg surrounded by sperm.

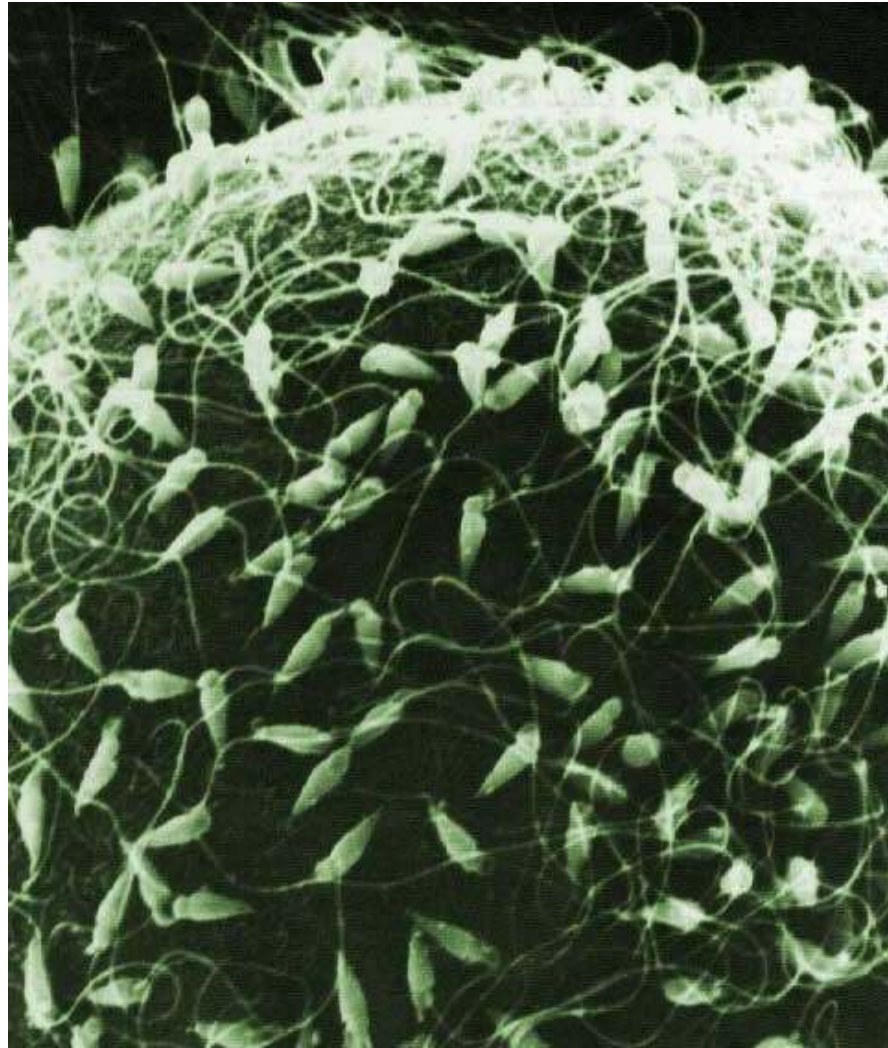


Genome of a female human

Human Female
G-bands

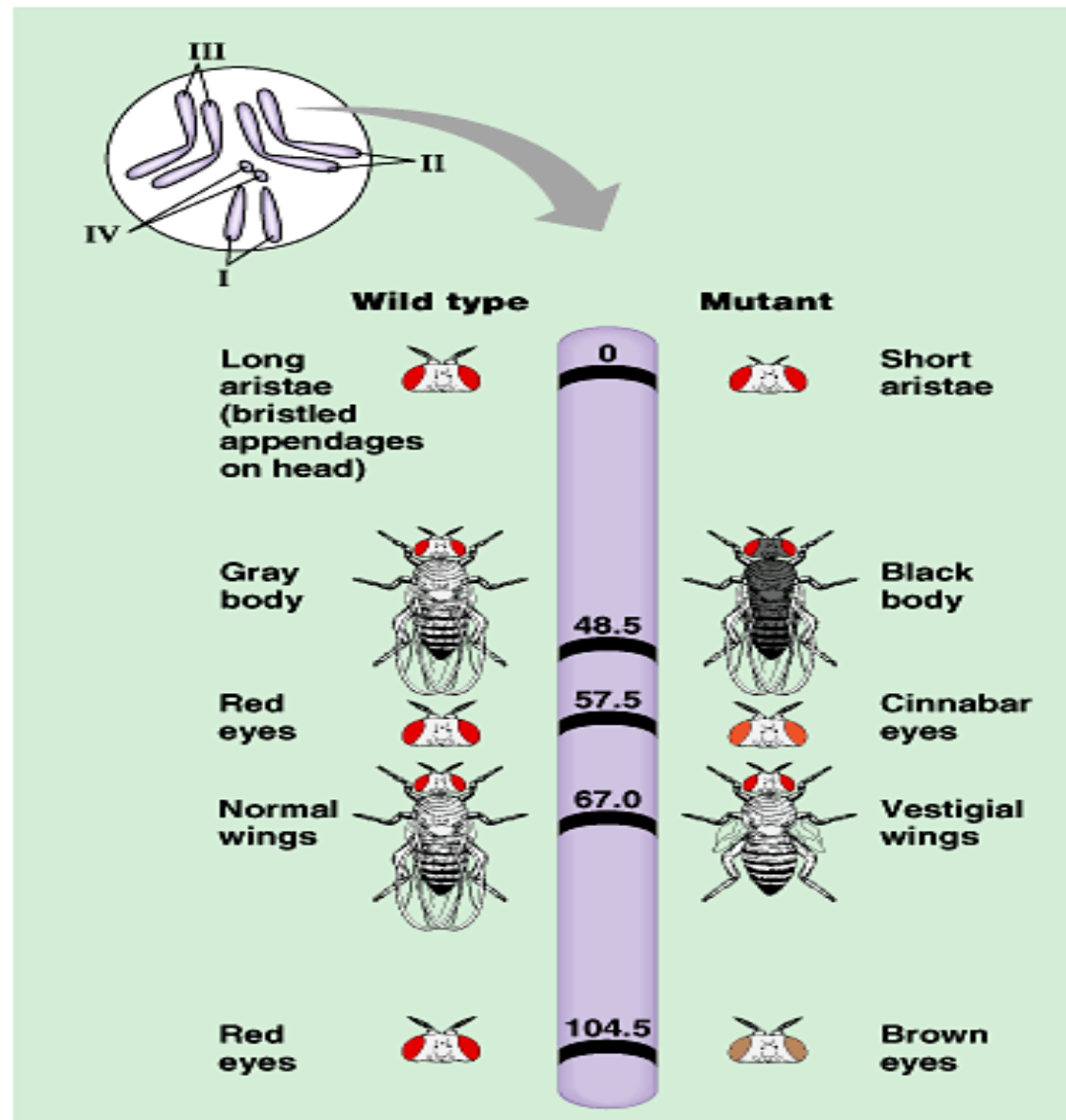


Half (n) from father &
half(n) from mother



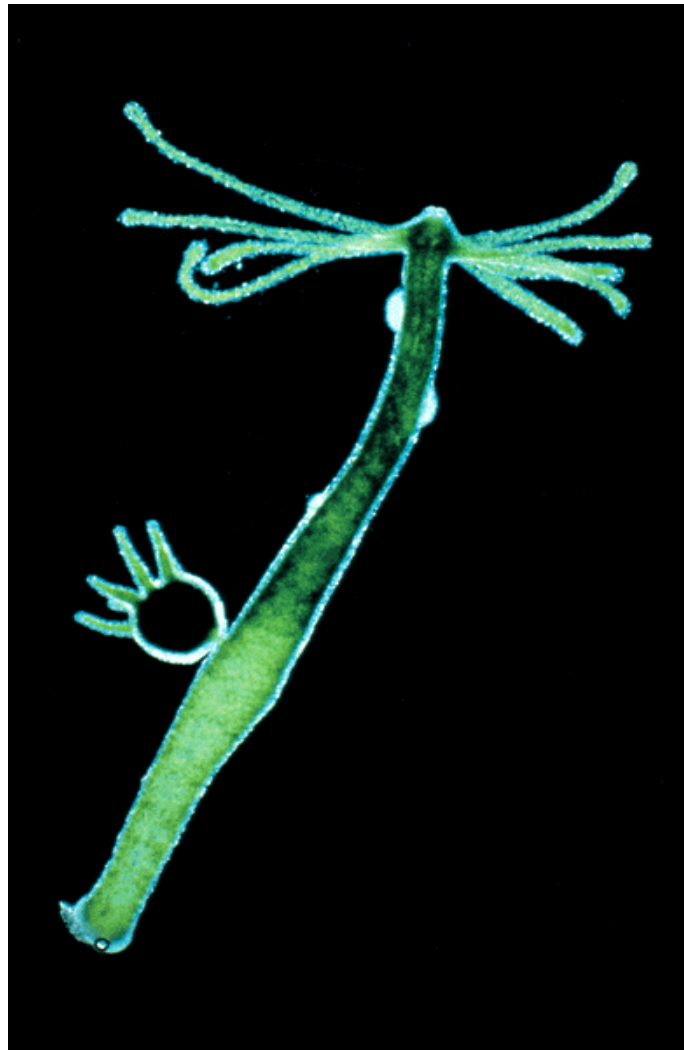
Locus

(Gene locations on chromosomes)



Asexual reproduction

See the bud on the side... that is the "new" organism to be.



Sexual Reproduction



Couple 1

Couple 2

